

Josephine Avenue, Brixton, SW2

3 bedroom flat to let

£738 Per Week

Furnished

Property Details

A luxury three bedroom, split level flat on the lovely little street - tucked away within walking distance of Brockwell Park. This wonderful flat comprises of three spacious double bedrooms, an open plan kitchen reception room filled with characterful features such as a period fireplace and original wooden flooring, an ensuite bathroom and a sleek modern family bathroom. Living here you will be within walking distance of Brixton High Street, boasting a plethora of shops, bars and restaurants.

Features

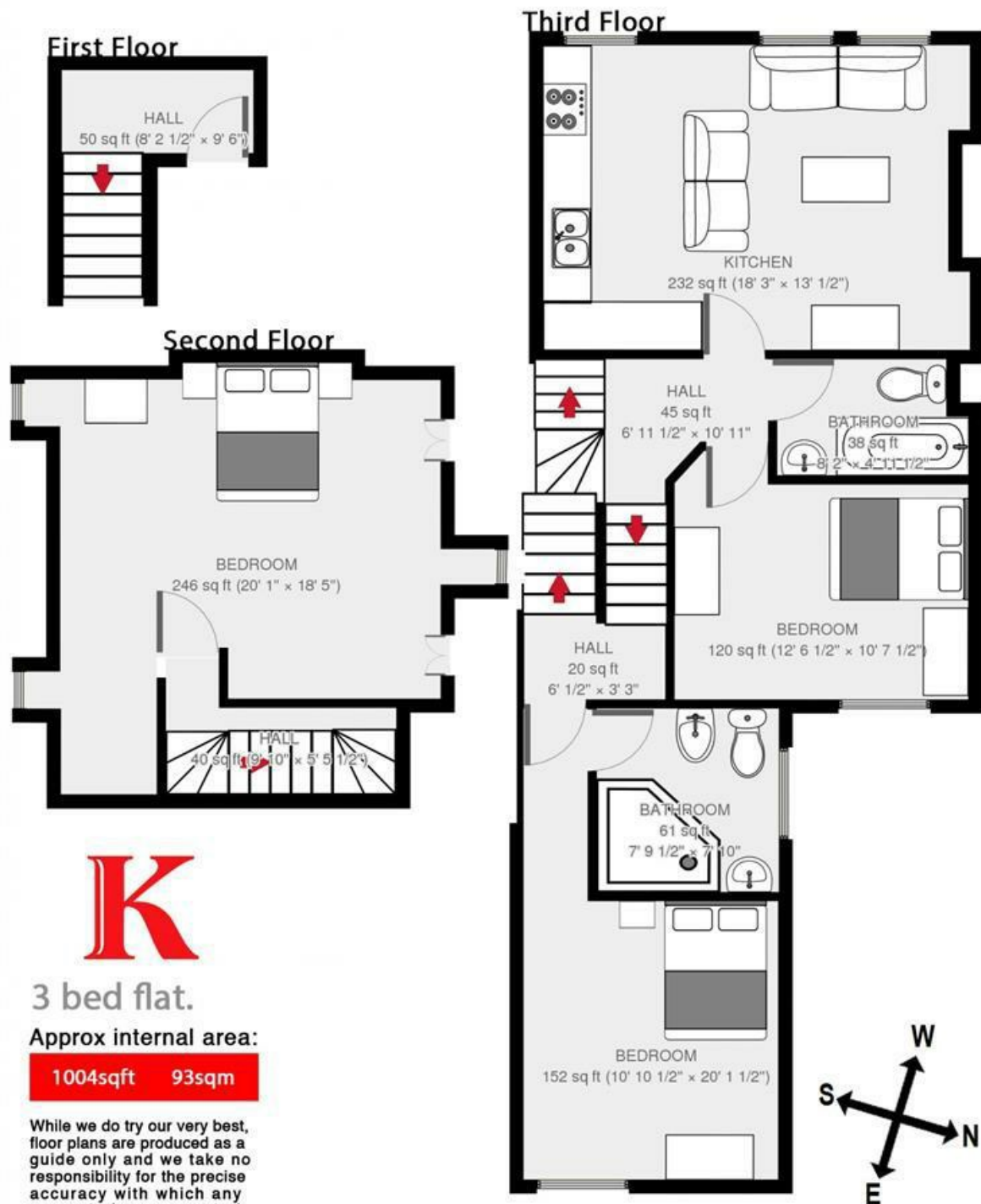
- Three bedroom
- Bright and airy throughout
- Sought after location
- Close to Brockwell Park
- Excellent transport links
- Stylish split level flat
- Furnished
- HMO

Council tax band C EPC rating D (68)



Josephine Avenue, Brixton, SW2

Josephine Ave



Josephine Avenue, Brixton, SW2

